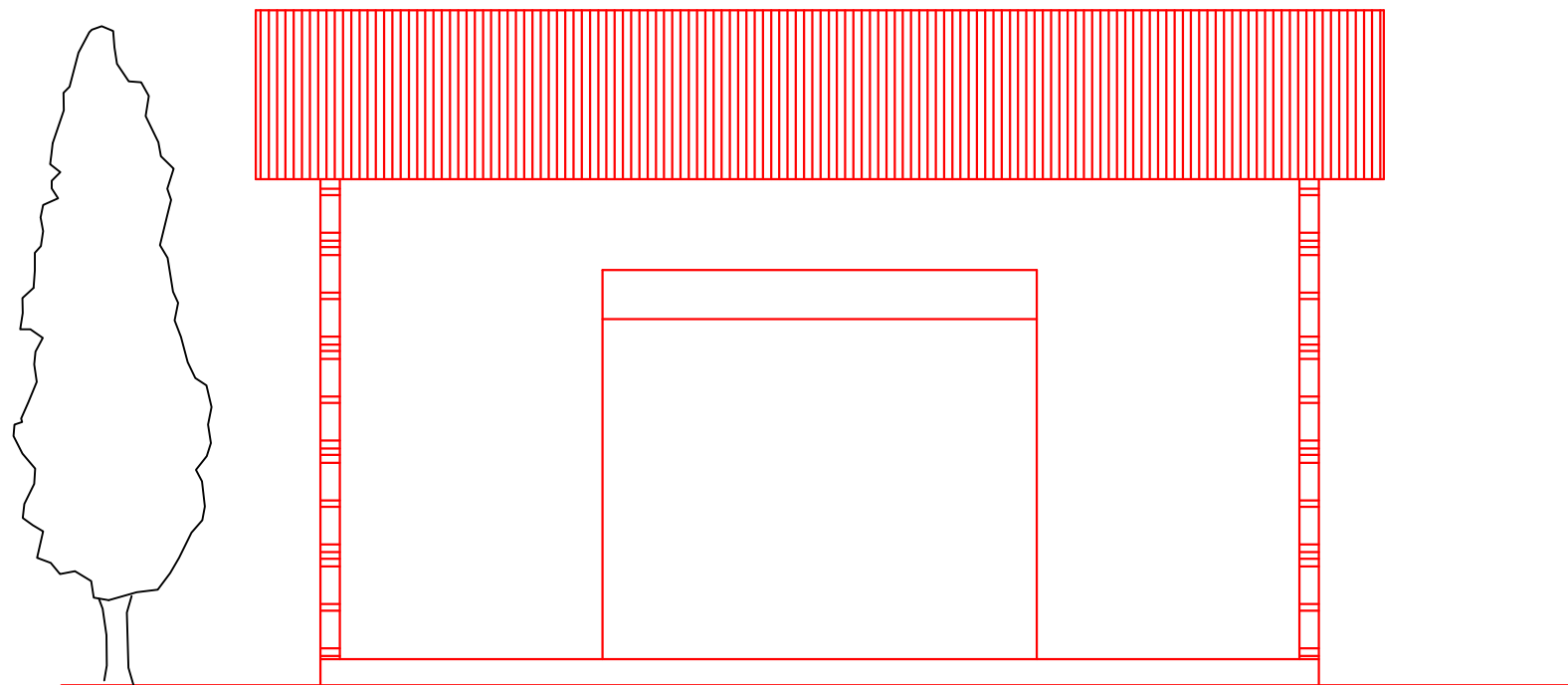



01 Fachada Lateral
Gs wkr co gpvq'eqo wpkº tkq



01 Fachada Frontal
Gs wkr co gpvq'eqo wpkº tkq

	<p>PREFEITURA MUNICIPAL DE ALMIRANTE TAMANDARÉ DO SUL - RS</p> <p>Rua Pe. Mario Linck, 352 Alm. Tamandaré do Sul - RS CEP: 99523-000</p> <p>Fone: (54) 3615-1154 E-mail: engenhariatamandare@gmail.com</p>	<p>Obra: Ú: asaa' } aa' a'</p>
		<p>Prancha: Fachadas Ô' a' a' ^) d' & { } aa' a'</p>
<p>Município: OH' ÉVaa' a' aa' ÁU' ÁU' D</p>		<p>Mat. Terreno:</p>
<p>Escala: 1:00</p>		<p>Prancha: P 1/1</p>
<p>Data: nov / 2018</p>		
<p>Valdeci Gomes da Silva Prefeito Municipal</p>	<p>Kelvin Weber Engenheiro</p>	